

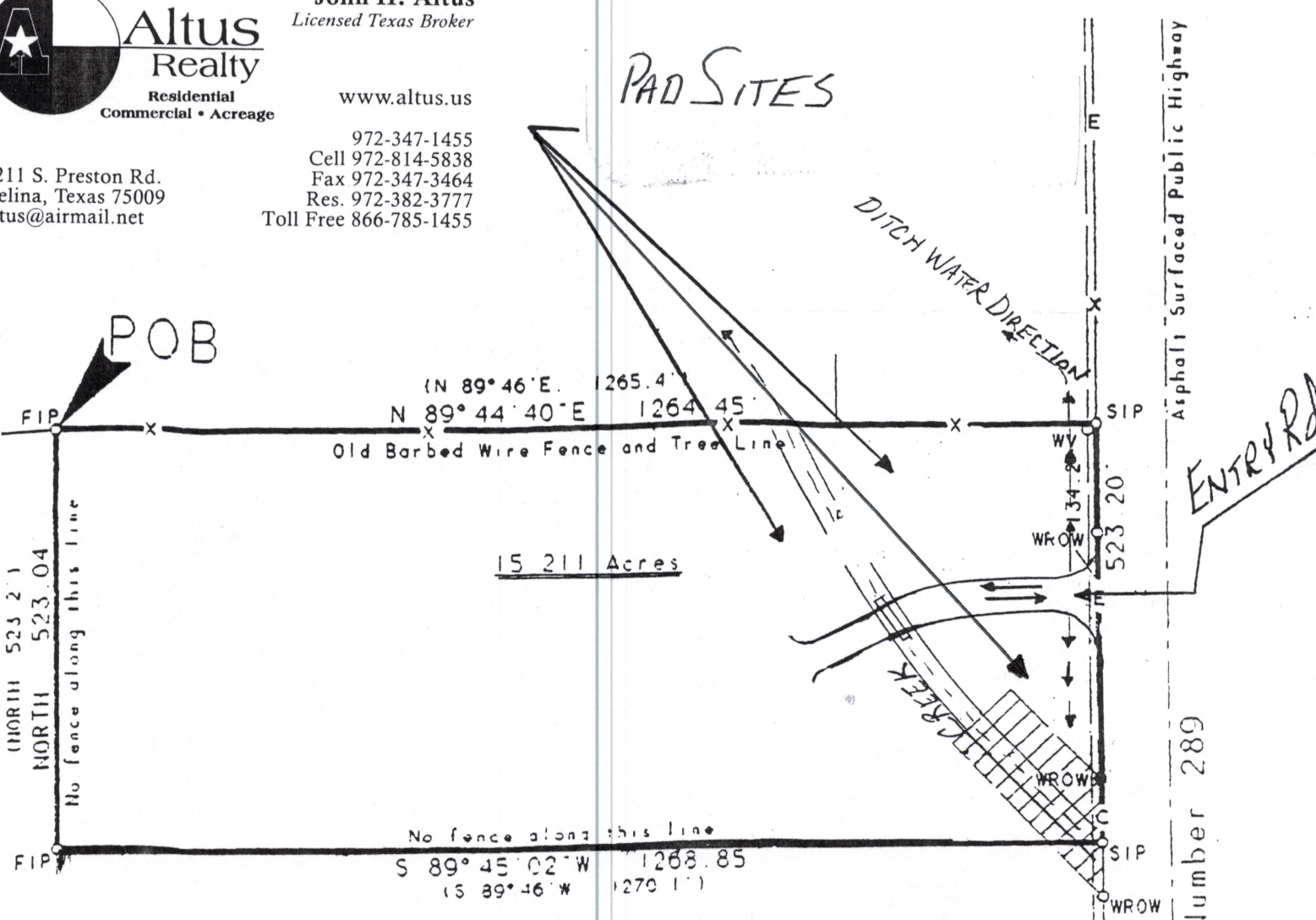
John H. Altus
Licensed Texas Broker

www.altus.us

972-347-1455
Cell 972-814-5838
Fax 972-347-3464
Res. 972-382-3777
Toll Free 866-785-1455

4211 S. Preston Rd.
Celina, Texas 75009
altus@airmail.net

PAD SITES



POB

FIP

(NORTH 523.21)
NORTH 523.04
No fence along this line

FIP

(N 89° 46' E. 1265.4'
N 89° 44' 40" E 1264.45'

Old Barbed Wire Fence and Tree Line

15.211 Acres

DITCH WATER DIRECTION

TR CREEK

ENTRY RD

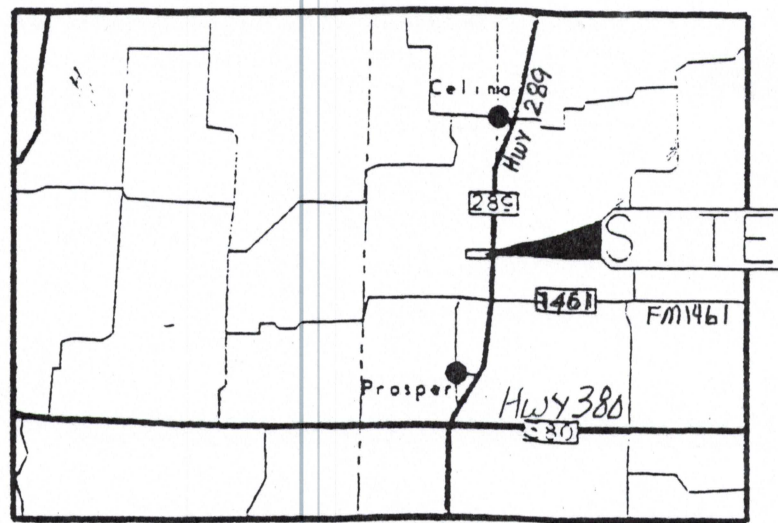
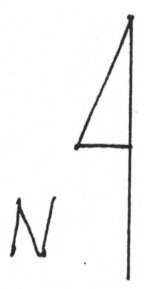
Asphalt Surfaced Public Highway

No fence along this line

S 89° 45' 02" W 1268.85'
(S 89° 46' W 1270.1')

134.2'
523.20'

State Highway Number 289



Location Map

PROPOSED
ENTRY
ON
15.211-Ac.